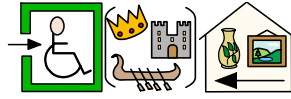


Access to Heritage



Making it work for everyone

Ideas for heritage sites
welcoming visitors
with a learning disability



Produced by
The Forum of the Heritage Project
Merseyside



Easy read summary

Contents

Aim.....	3
The people who took part in the project.....	3
What are heritage sites?.....	4
Our advice about access to heritage sites.....	5
Our advice about working with a forum like ours ...	7
Members of the Access to Heritage Forum	9



Aim

We want heritage sites to listen to people with a learning disability. If it works for us it will work for most people.

The people who took part in the project

The Forum

- 25 adults
- Meeting once a month since January 2006
- We have visited 11 sites
- We have taken photographs
- We have made films
- We have made notes
- We have drawn pictures
- We have used questionnaires
- We have talked



What are heritage sites?

They are places and buildings like



Castles



Galleries



Museums



Old ships



Churches



Palaces



Old houses

Our advice about access to heritage sites

People with a learning disability

- Have not usually visited many heritage sites
- Like short visits
- Like information in small chunks
- Want heritage sites to tell them what is going on
- Want to feel welcome
- Like staff who are trained by people with a learning disability
- Like signs with symbols
- Like signs with simple language
- Like signs that are easy to see and read



More advice



- Want clear directions
- Like to use all their senses
- Don't enjoy lots of things happening at the same time



- Enjoy videos, music and computers



- Want hands-on exhibits
- Enjoy the use of contrasting colours for directions

- Enjoy the use of contrasting colours for exhibits

- Like people to explain the site

- Enjoy costumes

- Want somewhere to sit down



Our advice about working with a forum like ours

People with a learning disability

- Want heritage sites to have people whose job it is support them
- Want lots of people from heritage sites to meet them
- Want to be seen to be important
- Like to work for short periods of time
- Like to focus on one aspect of a heritage site at a time
- Need to decide what they are doing
- Are the experts
- Like to have strong advocates
- Need time to test out ideas
- Like to have regular supporters



More advice

People with a learning disability



- Like supporters to have their say

- Like supporters who don't always take charge



- Enjoy a regular pattern to their meetings

- Want meetings to be both work and fun



- Often face difficulties with transport

- Like to communicate using all their senses



- Want to do research in lots of different ways

Members of the Access to Heritage Forum



Matty &
Nichola



Sheila



Leslie



Philip



Lila



Antony



Barry



June



Tommy



Suzanne



Gerry



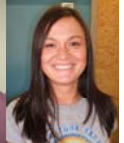
Angela



Dawn



Eddie



Sheila



Daniel



Donald



Matty



Shirley



Linda



Liz



Tina

Royal School for the Blind

Matthew Heard
Daniel Harwood
Christopher Bingham
Mark Anderson
Ricky Bemtham
Robert Stirrup
Lynda Hogan
Nichola McGorin

Liverpool 8 Resource Centre

Tina O'connor
Philip Foxley
Lila Wilson
Sheila Cosgrove
Brenda Walker
Liz Gouirah

Parthenon House

Donald Birchall
Lesley Marshall

Old Swan/DoveCot Day Centre

Antony Doran
Linda Sullivan
Dawn Newby
Angela Green
Sheila Letts

Halewood Resource Centre

Tom Barton
Eddie Barton
Barry Francis
Suzanne Faulkner
June Jenkins
Geraldine Regan

Project Leader – Alan Griffiths
Project Co-ordinator – Ticky Lowe

Project Supporters –

Jimmy Cullen, Eileen Willshaw,
Kate Rodenhurst, & Jonathan Rix